

Kornbest. QUALITY STANDARD



LENGTH



WIDTH

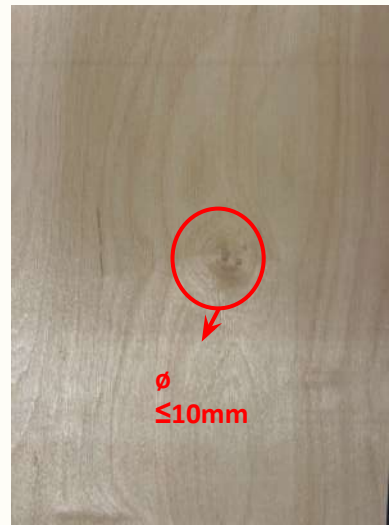


RELEASE DATE:
2024.08.14

DETAILS	
SPICES	BALTIC BIRCH
CUT	SPINDLE/SPINDLELESS
PLACE OF ORIGIN	LATVIA
LENGTH(MM)	800-2700 (ALLOWANCE:FROM-20 TO 30)
WIDTH(MM)	600-1400 (ALLOWANCE:FROM-20 TO 50)
THICKNESS(MM)	0.5-3.6
MOISTURE	4% - 12%
QUALITY	ABCD, D-,F



A Grade	
Small Knot	$\varnothing \leq 3\text{mm}$, 3pcs/m ²
Open Holes/Knot	×
Dark Knot	×
Light Healthy Knot	$\varnothing \leq 10\text{mm}$, 6pcs/m ²
Open Split	×
Bark Pocket	×
Rotten	×
Discoloration	×
Red Heart	×
Knife Mark	×
Dirt	×
Cut Off	×
Full Sheet	√



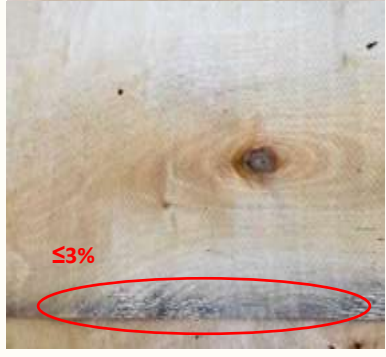


B Grade	
Small Knot	$\varnothing \leq 3 \text{ mm}$, 15pcs/m2
Open Holes/Knot	$\varnothing \leq 10 \text{ mm}$, 6pcs/m2
Dark Knot	$\varnothing \leq 10\text{mm}$, 10pcs/m2
Light Healthy Knot	$\varnothing \leq 30\text{mm}$
Open Split	x
Bark Pocket	x
Rotten	x
Discoloration	Slight Discoloration
Red Heart	x
Knife Mark	The depth of knife marks must not exceed 10% of the board thickness
Dirt	x
Cut Off	x
Full Sheet	√



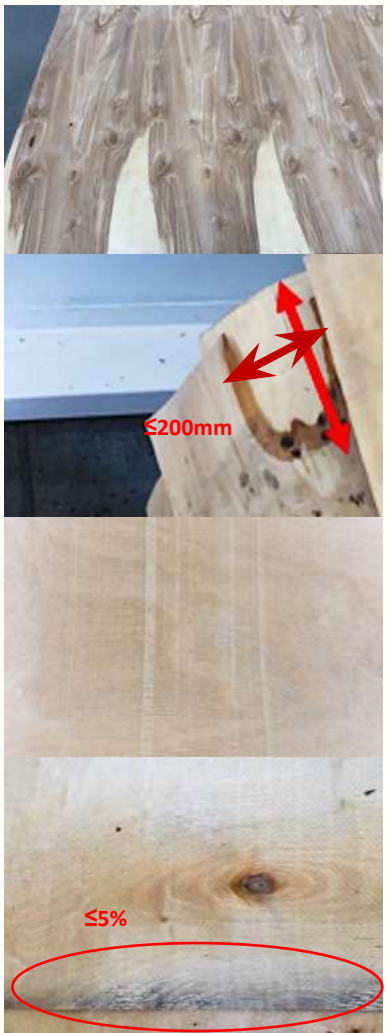


C Grade	
Small Knot	✓
Open Holes/Knot	Ø ≤ 45 mm, 6pcs/m2
Dark Knot	Ø ≤45 mm
Light Healthy Knot	✓
Open Split	width ≤ 5mm, length ≤ 300mm, up to 6pcs/m2
Bark Pocket	up to 200 mm, 1 pcs/m2
Rotten	×
Discoloration	✓
Red Heart	✓
Knife Mark	The depth of knife marks must not exceed 10% of the board thickness
Dirt	up to 3% of the sheet
Cut Off	≤100mm, 1 pcs/m2
Full Sheet	✓





D Grade	
Small Knot	√
Open Holes/Knot	ø ≤70mm
Dark Knot	ø ≤70mm
Light Healthy Knot	√
Open Split	width ≤10mm, length ≤500mm, up to 10pcs/m2
Bark Pocket	width≤200mm, length≤400mm / width≤120mm, length≤500mm, 2 pcs/m2
Rotten	Allowed in small amounts
Discoloration	√
Red Heart	√
Knife Mark	The depth of knife marks must not exceed 15% of the board thickness
Dirt	up to 5% of the sheet
Cut Off	≤200mm
Full Sheet	√





D- Grade	
Small Knot	√
Open Holes/Knot	Ø ≤100mm
Dark Knot	Ø ≤100mm
Light Healthy Knot	√
Open Split	width ≤ 15mm, length ≤ 600mm, up to 15 pcs/m2
Bark Pocket	width≤200mm, length≤400mm / width≤120mm, length≤500mm
Rotten	up to 10% of the sheet
Discoloration	√
Red Heart	√
Knife Mark	√
Dirt	up to 5% of the sheet
Cut Off	≤200mm, 2pcs/m2
Full Sheet	√





F Grade	
Small Knot	√
Open Holes/Knot	$\varnothing \leq 100\text{mm}$
Dark Knot	$\varnothing \leq 100\text{mm}$
Light Healthy Knot	√
Open Split	width $\leq 25\text{mm}$, length $\leq 650\text{mm}$, up to 20 pcs/m ²
Bark Pocket	width $\leq 200\text{mm}$, length $\leq 500\text{mm}$ / width $\leq 120\text{mm}$, length $\leq 600\text{mm}$
Rotten	up to 20% of the sheet
Discoloration	√
Red Heart	√
Knife Mark	√
Dirt	up to 10% of the sheet
Cut Off	$\leq 300\text{mm}$, 3pcs/m ²
Full Sheet	X match into one full sheet

